



Shaler Area School District

SCOTT PRIMARY SCHOOL



Project Progress
February 09, 2018



MEP's Continue



Massaro
CM SERVICES, LLC



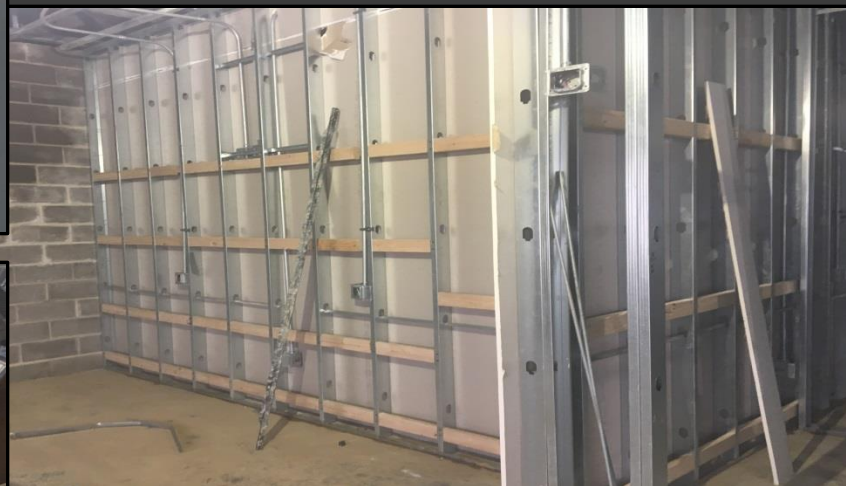
MEP's Continue



Massaro
CM SERVICES, LLC



Drywall Continues





Drywall Continues





Insulation is Underway



Massaro
CM SERVICES, LLC



Cement Board Continues





Interior Metal Framing Continues



Massaro
CM SERVICES, LLC



Stage @ Gymnasium



Massaro
CM SERVICES, LLC



Exterior Masonry





North Elevation View

February 09, 2018



Massaro
CM SERVICES, LLC



South Elevation View

February 09, 2015



Massaro
CM SERVICES, LLC



Pull Planning

Week of February 05, 2018

PRIME	MON.	TUES.	WED.	THUR.	FRI.	S.O.G.
A-1	<ul style="list-style-type: none"> - MP AREA A - R.R. Piping - Wire Into C - END R1 AREA D 		<ul style="list-style-type: none"> - Piping In Lobbyway 			<ul style="list-style-type: none"> - Begin R1 AREA A R.R. - Lobbyway R1 Piping Endline
NELLO	<ul style="list-style-type: none"> - Windows in AREA C - DASH & DOWNERS - GROUND PAVED DETAIL - Paved Area Paved - TENT STALLING AREA C 		<ul style="list-style-type: none"> - PA Roofing DELIV. 	<ul style="list-style-type: none"> - PA Admin Roof? 		<ul style="list-style-type: none"> - Begin Windows in AREA C - Begin Roofing in Admin - Complete Louvers in AREA B - Complete AREA D STEEL DETAIL
RAM	<ul style="list-style-type: none"> - Framing in AREA C RESTROOM - SOUND BONES FRAMING "B" 	<ul style="list-style-type: none"> - DELIV. BOARD FOR SOUND WALLS 	<ul style="list-style-type: none"> - HANG VEST. SOUND BOARD AREA D10 CORRIDOR 			<ul style="list-style-type: none"> - Complete FRAMING AREA D - SOUND WALL R11. BOARD
HARRIS	<ul style="list-style-type: none"> - END MORE WALLS IN GYM - Complete - BRICK VEST. WALL GYM - GYM ENTRANCE 	<ul style="list-style-type: none"> - Trophy Cases AREA C 	<ul style="list-style-type: none"> - BRICK Entry Side GYM 			<ul style="list-style-type: none"> - Complete MORE CMU in GYM - Frame BRICK VEST. WALL GYM - Begin Trophy Cases in C - Complete GYM ENTRANCE
VRABEL	OFF SITE	AREA C R.I.				<ul style="list-style-type: none"> - BEGIN AREA C/D ROOF DOWNS A CH. R.I.
HRANEC	<ul style="list-style-type: none"> - DOWNERS - TAPS IN CORRIDOR 	<ul style="list-style-type: none"> - DELIV. ADMIN DUCT 	<ul style="list-style-type: none"> - FIVE INSTALL 	<ul style="list-style-type: none"> - ADMIN ROOF CURBS 		<ul style="list-style-type: none"> - LOWER DUCT @ DOWNERS - LOWER DUCT @ GABLES - ADMIN ROOF CURBS
EAST WEST	<ul style="list-style-type: none"> - OLD WALL PENETRATIONS - PIPING R1 - ADMIN 	<ul style="list-style-type: none"> - ROOF CURB DELIV. 	<ul style="list-style-type: none"> - ROOF CURB INSTALL? 			<ul style="list-style-type: none"> - INSTALL CURBS AND AREA C ROOF - Begin Piping R1 - AREA C





NEW PRIMARY SCHOOL ON SCOTT AVE.

Scheduled Work for Upcoming Weeks

- Continue MEP Systems
- Interior CMU
- Interior Metal Framing
- Interior/Exterior CMU @ Area C & D
- Roofing